



Product + Highlights

- + Universal compatibility: can be installed throughout the home in any configuration
- + Discrete and strong fibre optic cable: virtually invisible to the naked eye
- + No welding required: all connectors in kit are factory-welded
- + Extremely flexible cable for easy installation: G.657.A2 or B3 cable storage capacity

Description

Introducing the OT'Home Resist:

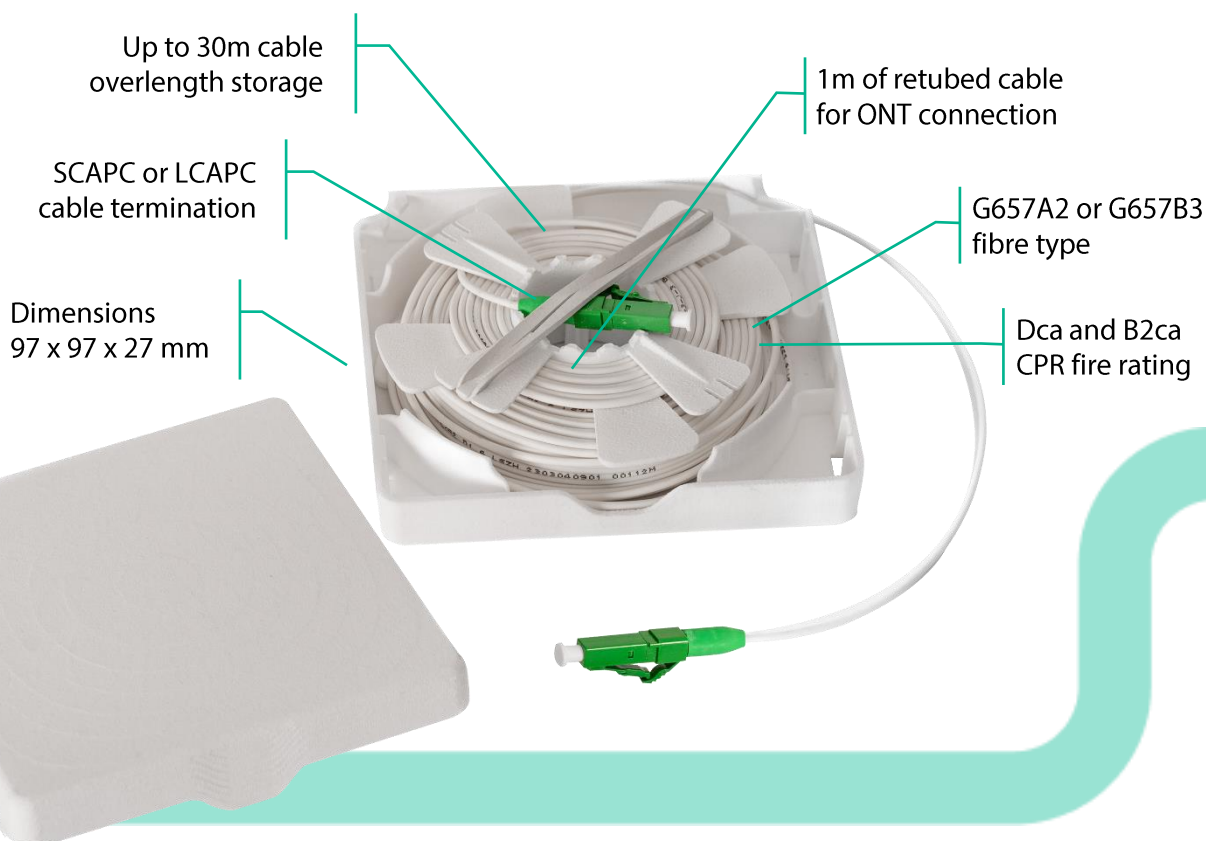
Your Ultimate Connection Solution!

Say goodbye to complicated installations and hello to **seamless connectivity** with **the OT'Home Resist**.

Designed to **effortlessly** link the subscribers' connection node to the optical termination outlet, no matter where it's **positioned** within your home.

With the **storage** of its pre-connected **high-resistance** cable, you gain access to a **flexible, discreet**, and secure solution that effortlessly integrates into existing ducts.

No need for costly professional installations, now anyone can become a DIY expert!





Features

		Cable Ø 1.6 mm	Cable Ø 0.9 mm	Standard reference
Cables	Optical fibre	G.657.A2	G.657.B3	ITU-T
	Cable jacket	White LSZH	White LSZH	-
	Cable outer diameter (OD)	1.6 mm	900 µm	-
	Minimum bending radius	Static : 10 D Dynamic : 20 D	Static : 10 D Dynamic : 20 D	IEC 60794-1-2 E6
	Tensile load	60 N	Awaiting qualification results	IEC 60794-1-21-E1 IL ≤ 0,1 dB @1550 nm
	Short term crush resistance	50 N/cm	Awaiting qualification results	IEC 60794-1-21-E3A IL ≤ 0,1 dB @1550 nm
	Operating temperature	-20 °C to 70 °C	-15 °C to 45 °C	IEC 60794-1-22-F1
	Fire Euroclass	Dca or B2ca	Dca	CPR
Assembly	Length of 1.6 retubed cable on ONT side	1 m		-
	Optical performance of factory-mounted connectors	IL < 0.5 dB RL > 55 dB		
OT'Home Box	Dimensions	97 x 97 x 27 mm		-
	Mounting method	Double-sided adhesive tape or screws Ø4mm max (not included)		-

Delivery details


Part Number	Description	Cable type	Unit packaging	Unit per box
MO302	OT'HOME RESIST 1.6MM 20M LC/APC Dca	G657A2	1 pc	30 pcs
MO303	OT'HOME RESIST 1.6MM 20M SC/APC Dca	G657A2	1 pc	30 pcs
MO304	OT'HOME RESIST 1.6MM 20M SC/APC B2ca	G657A2	1 pc	30 pcs
MO307	OT'HOME RESIST 1.6MM 20M LC/APC B2ca	G657A2	1 pc	30 pcs
MO305	OT'HOME RESIST 0.9MM 30M + 3MM SCAPC Dca	G657B3	1 pc	30 pcs



We can manufacture longer links upon request. In such cases, the additional cable length is stored in a cardboard spool, with the box located at the center.

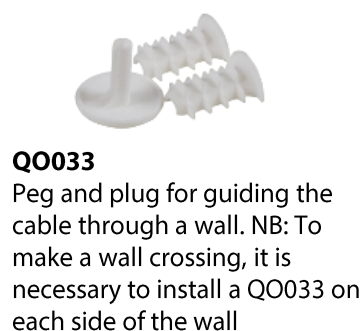


Glue

 <p>Q0036 Glue for fixing the cable and accessories along the route</p>	Glue type	Silicon based, mono component
	Type of surfaces	All types of housing materials (wood, plaster, concrete, brick, wallpaper, ceramics, metals, glass, plastics, etc.)
	Drying time	Touch dry after 6 minutes, fully set after 24 hours
	Colour	Transparent
	Format	310 ml Tube (quantity for about 5 installations)
	Precaution	Store at room temperature

Part Number	Description	Packaging
Q0036	GLUE TUBE of 310 ml	1 unit

Routing accessories for 0,9 mm cable



Part Number	Description	Packaging
PO030	THROUGH WALL SC TOOL	Bag of 5 units
Q0030	INNER CORNER HOME µCABLE	Bag of 50 units
Q0031	OUTER CORNER HOME µCABLE	Bag of 50 units
Q0033	WALL PASSAGE ELEMENT ø 12mm HOME µCABLE	Bag of 50 units

