



DISTRIPROTECT L PRECON

> PRODUCT

+ BENEFITS

- + Distri-Protect®: Dedicated and protected area for distribution fibres
- + E@sy'Secure®: Guaranteed to keep distribution and subscriber cables in place over time, short installation time
- + Cabled product IP55 rated
- + Modular anchorage bars
- + Up to 32 SC/APC adapters held on an ergonomic tilting holder

> DESCRIPTION

The Aerial Subscriber Node allows connection between subscriber cables and the distribution cable on an FTTx network. The ASN is designed for pole or wall mounting.

Using adapters & pigtails in the distribution box provides a faster and more secure connection. Field tests show that the pre-terminated connection of a subscriber divides by 3 the risk of damaging an adjacent connection, in relation to a spliced connection.



Distri-Protect®: distribution cable fibres assigned to subscribers are spliced to pigtails when installing the box. The distribution cable to pigtails connection zone is closed by an inner cover to protect the wiring.



The Omelcom aerial distribution box is also equipped with the E@sy'Secure® anchoring system, a simple way to hold the cables securely in place, in accordance with standard EN 61300-2-4, with an installation time of only 45 seconds per cable



Dans le souci de mieux servir ses clients et d'améliorer les performances de ses produits, OMELCOM se réserve la possibilité de modifier les présentes caractéristiques sans notification préalable



DISTRIPROTECT L PRECON

> UNIQUE SELLING PROPOSITION



Distri-Protect® protects distribution cables during the connection phase, and allows bypass and spliced connections to be housed in the same box

- ⊕ Reduces the total amount of boxes needed by 10%
- ⊕ Saves the corresponding installation cost
- ⊕ Reduces maintenance cost as it limits the risk of fibre breakage during connection



E@sy'Secure® guarantees secure attachment of the distribution cables

- ⊕ Divides anchoring installation time by 10 and multiplies anchoring performance by 4
- ⊕ Less medium/long term maintenance



Dans le souci de mieux servir ses clients et d'améliorer les performances de ses produits, OMELCOM se réserve la possibilité de modifier les présentes caractéristiques sans notification préalable



DISTRIPROTECT L PRECON

> PRODUCT PRESENTATION

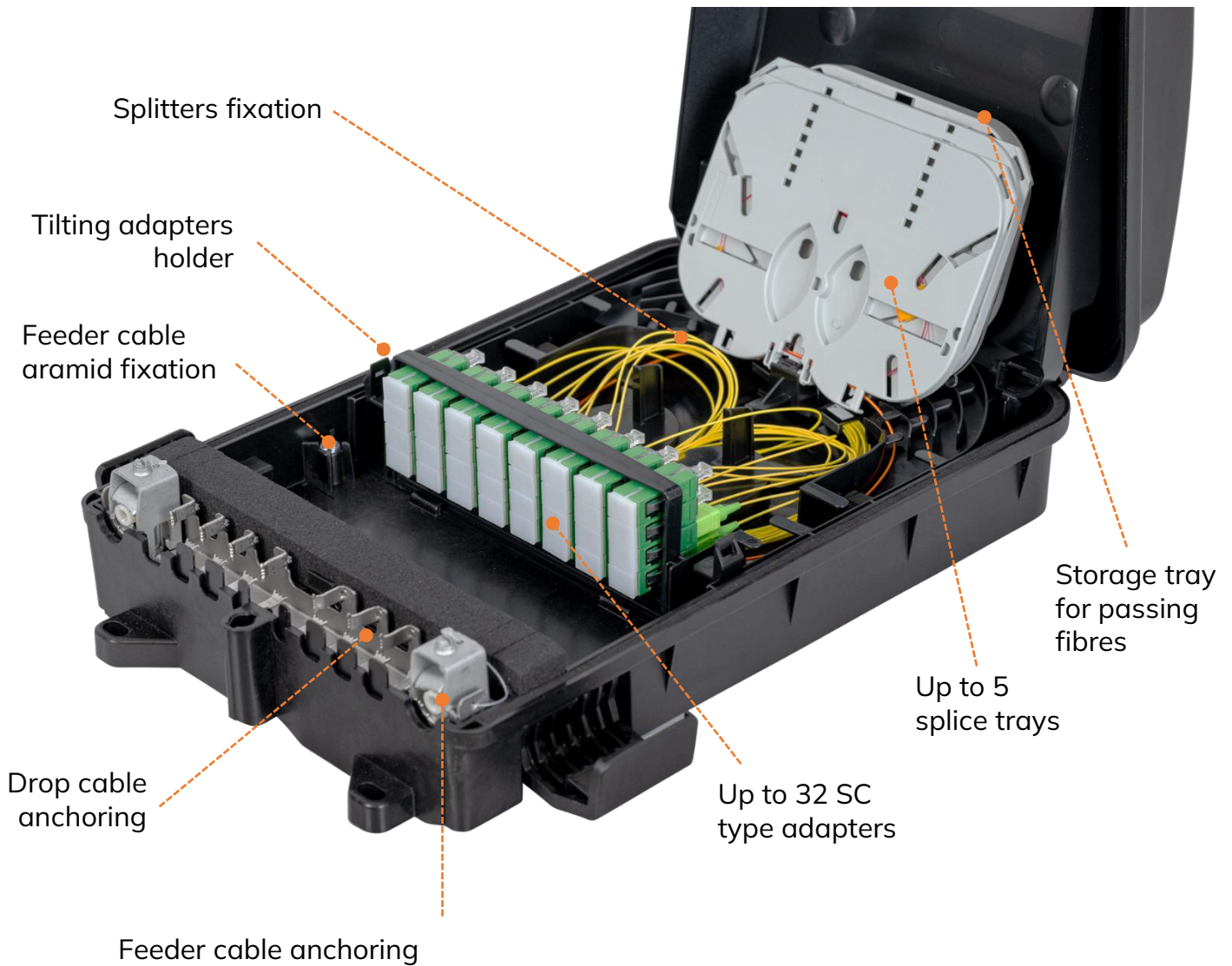


POLE | WALL



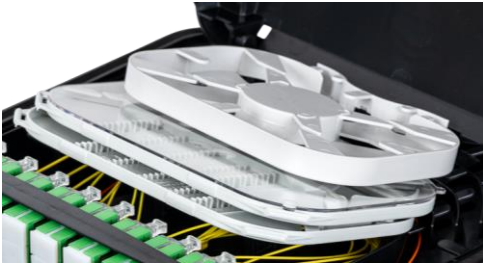
IP55 | IK07

Dimensions 346 x 232 x 90 mm



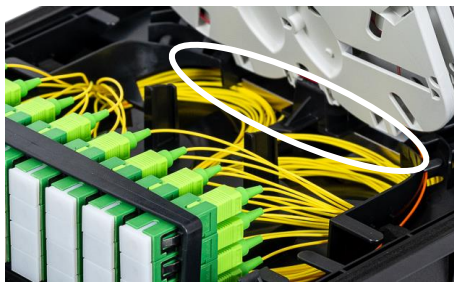
Dans le souci de mieux servir ses clients et d'améliorer les performances de ses produits, OMELCOM se réserve la possibilité de modifier les présentes caractéristiques sans notification préalable

> SPLICING & STORAGE CAPACITY



Features of the trays	Splice tray performance
Max number of splice trays	4 splice trays or 3 splice trays + 1 fibre passing through tray
Compatible splice tray models	LUNA splice trays

> SPLITTER CAPACITY

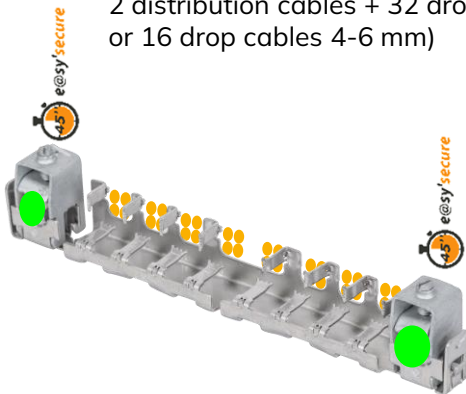


Splitter type	1:4 or 1:8	1:16	1:32
	Bare input Precon output	Bare input Precon output	Bare input Precon output
Splitter size	60 x 7 x 4 mm	60 x 12 x 5 mm	80 x 20 x 6 mm
Max number of splitter bodies	4	2	1

> CABLE INPUTS & OUTPUTS

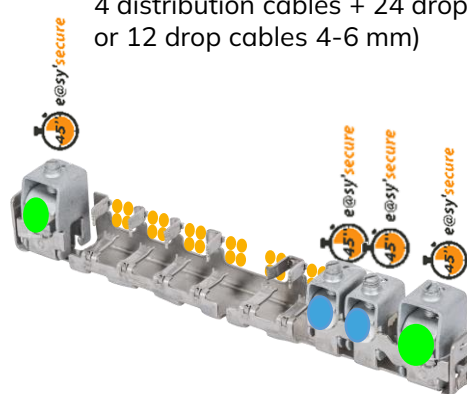
Anchoring bar option 1

2 distribution cables + 32 drop cables (1-3 mm)
or 16 drop cables 4-6 mm)



Anchoring bar option 2

4 distribution cables + 24 drop cables (1-3 mm)
or 12 drop cables 4-6 mm)



● Câbles $6 \leq \varnothing \leq 15$ mm ● Câbles $6 \leq \varnothing \leq 10$ mm ● Câbles $1 \leq \varnothing \leq 3$ mm

Dans le souci de mieux servir ses clients et d'améliorer les performances de ses produits, OMELCOM se réserve la possibilité de modifier les présentes caractéristiques sans notification préalable

> TECHNICAL CHARACTERISTICS

Characteristics	Performances	Reference standard
Volume and dimensions	Dimensions 346 x 232 x 90 mm	-
IP – IK	IP55 IK07	EN 60529 EN 61300-2-12
Material	PP loaded fiberglass UV resistant Grey or black	- ISO 4892-2 ISO 11664-4
Cable anchoring tensile strength	20 D for HDPE sheaths 10 D for LSZH sheaths	EN 61300-2-4
Cable anchoring torsion strength	± 90°	EN 61300-2-5
Cable anchoring flexion strength	± 30°	EN 61300-2-37
With cable tie		
Cable anchoring tensile strength	10 D for HDPE sheaths 10 D for LSZH sheaths	EN 61300-2-4
Cable anchoring torsion strength	± 90°	EN 61300-2-5
Cable anchoring flexion strength	± 30°	EN 61300-2-37
Box closing	Triangle key closure + 2 toggles	-
Fixing	By screw on facade (3 screws) By screw on bracket By strapping directly on pole	-

> FIXATION DETAILS



Dans le souci de mieux servir ses clients et d'améliorer les performances de ses produits, OMELCOM se réserve la possibilité de modifier les présentes caractéristiques sans notification préalable



DISTRIPROTECT L PRECON

> ORDERING INFORMATION

PART NAME CONSTRUCTION MODEL

DP/L - B - - - P - L - Ex: DP/L-B2-24HS-24SCA-P24FT-L0-BK

1 2 3 4 5 6 7 10 11

// - S - L - Ex: DP/L-B3-12ANT-32LCA-S2/16-L3-BK

8 9 10 11

- 1** Type of anchoring bar
2 = Anchoring bar option 1
(2 distribution cables + 32 drop cables)
3 = Anchoring bar option 2
(4 distribution cables + 24 drop cables)
- 2** Number of splices (0, 12, 24, 36 or 48)
Please note that a storage tray is always included except for 48 splices configuration
- 3** Type of splice protectors
HS = Heatshrink
ANT = Crimp
- 4** Number of connections (from 1 to 64)
- 5** Adapter type
SCA = SC/APC 8° (max 32 connections)
LCA = LC/APC 8° (max 64 connections)
SCU = SC/UPC (max 32 connections)
LCU = LC/UPC (max 64 connections)
- 6** Number of pigtails (0, 12, 24, 36 or 48)
- 7** Order for the pigtail colors
FT = France Telecom color code
DIN = DIN color code
TI = TIA-598
- 8** Number of splitters (0, 1, 2, 3 or 4)
- 9** Type of splitters
/4 = 1:4 splitter
/8 = 1:8 splitter
/16 = 1:16 splitter
/32 = 1:32 splitter
- 10** Key lock type
0 = no lock
3 = triangle lock
- 11** Colour of the closure
BK = Black

> LOGISTICS

Part number	Description	Unit packaging	Unit per box	Unit per pallet
DP/L-X	DISTRIPROTECT L PRECON CONFIGURED	None	6 pcs	192 pcs

Dans le souci de mieux servir ses clients et d'améliorer les performances de ses produits, OMELCOM se réserve la possibilité de modifier les présentes caractéristiques sans notification préalable