

PRODUCT + BENEFITS

- + Compact boxes for a limited wall footprint
- + E@sy'Secure quick and strong anchoring system on feeder cable / microduct
- + Suitable for splicing, connecting and splitting applications
- + IP55 rating
- + Intuitive use
- + Security lock

PRESENTATION

LUNA are compact enclosures designed for optical connections, now featuring a sleek design, improved waterproofing, and enhanced user experience.

The refined design includes better sealing for dust and water resistance, ergonomic opening clips, a security lock, and easy cap removal.

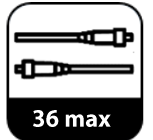
The enclosures still support splice trays, connectors, and splitters for various network applications and maintain a minimum bending radius of 30 mm for G652 and G657 fiber types.

Suitable for dusty areas, parking, cellars, façades, and poles with an IP/IK rating.

New Design!



LUNA S



LUNA M

ENCLOSURES SPECIFICATIONS

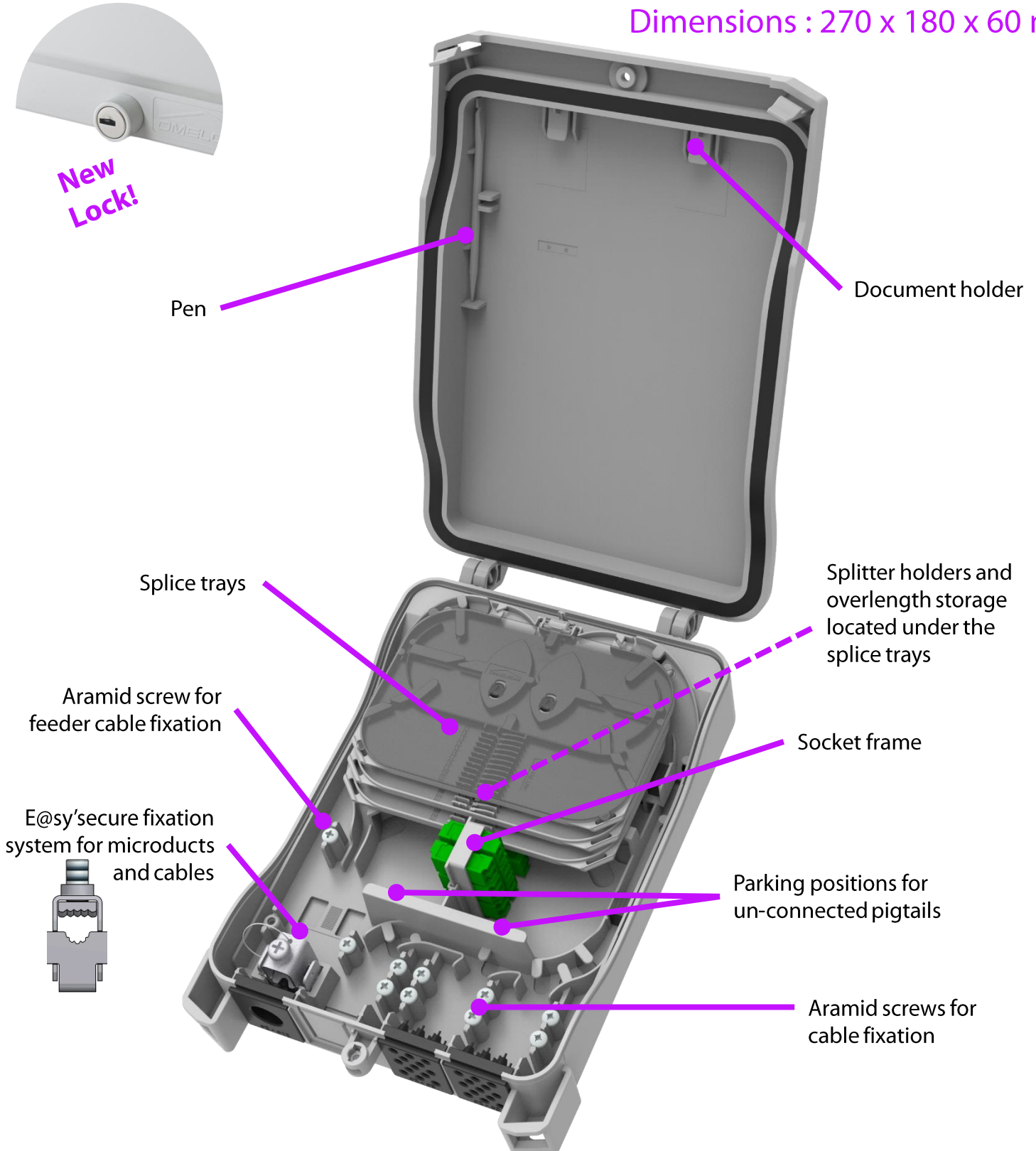
Features	Performance		Reference standard
	LUNA S	LUNA M	
Dimensions	270 x 180 x 60 mm	400 x 250 x 110 mm	-
IP rating	IP55		EN 60529
Impact	IK08	IK07	EN 61300-2-12 at -25°C
Material	PC compound		-
Flame resistance	V0		UL94
UV resistance	Compliant		EN ISO 4892 3: method B, cycle n°5 (350 h)
Compatible fiber type	G652D, G657A1, G657A2		Minimum curves of radius 30 mm
Anchoring method	E@sy'Secure system on feeder port Screw to fix the aramid yarns or FRP of the cables on output ports		-
Restriction of unauthorized access	Thread for coded M4x19 screw		-
Splice capacity	Up to 3 splice trays with 12 splice protectors each => max capacity 36 splices	Up to 14 splice trays with 12 splice protectors each => max capacity 168 splices	-
Socket capacity	Up to 7 SC simplex or LC duplex sockets	Up to 36 SC simplex or LC duplex sockets	-
Splitter capacity	Up to 3 splitter bodies 60 x 7 x 4 mm (typically 1:4 or 1:8)	Up to 6 splitter bodies 60 x 7 x 4 mm (typically 1:4 or 1:8) Up to 2 splitter bodies 60 x 12 x 5 mm (typically 1:16) Up to 2 splitter bodies 80 x 20 x 6 mm (typically 1:32)	-

SPLICE TRAY SPECIFICATIONS

Features	Splice tray performance	Reference standard
Compatible splice protectors	<ul style="list-style-type: none"> 12 ANT crimp splice protectors 12 Heat shrink splice protectors ø2,3 to 2,6 mm, length 40 to 60 mm 	-
Compatible fiber type	G652D, G657A1, G657A2	Minimum curves of radius 30 mm
Height of the splice tray	6 mm	-
Length of 250 µm fiber that can be stored	> 36 m	Storage of 2x12 pigtailed of 1,50 m

DRAWING LUNA S

Dimensions : 270 x 180 x 60 mm

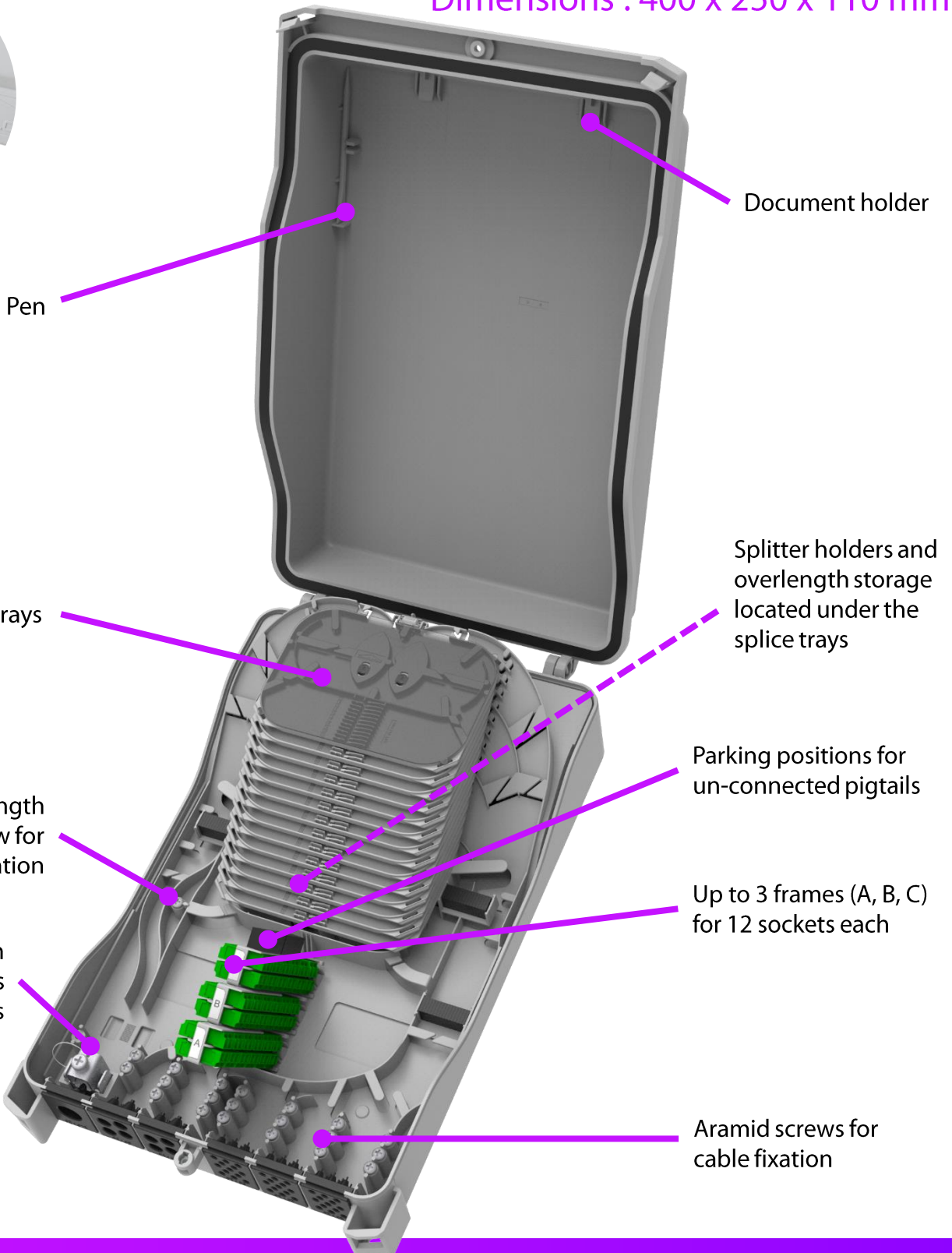


DRAWING LUNA M

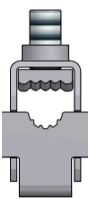
Dimensions : 400 x 250 x 110 mm



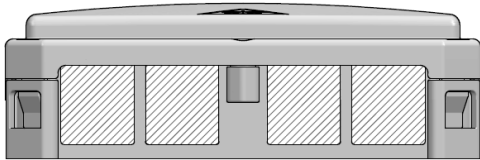
New Lock!



E@sy'secure fixation system for microducts and cables

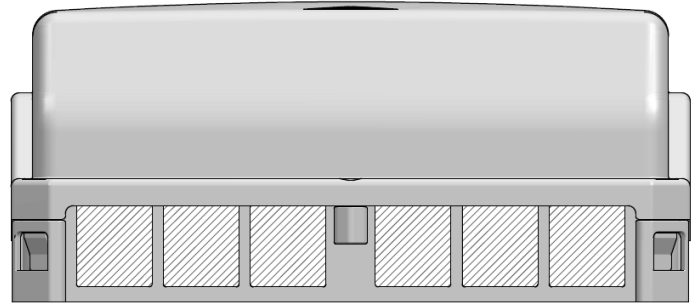


CABLE ENTRY PORTS



LUNA S

4 possible entry ports



LUNA M

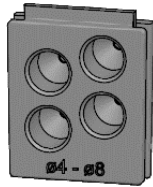
6 possible entry ports

SEALINGS

CABLE SEALS



1 x ø2-12 mm

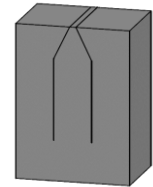


4 x ø4-8 mm



13 x ø2-3 mm

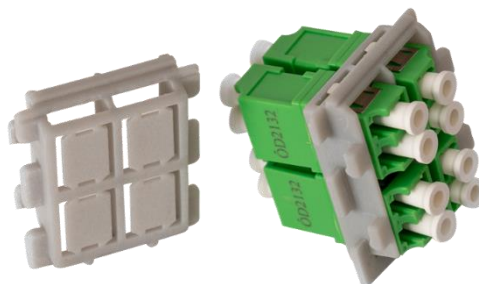
SLIT SEAL FOR PATCHCORDS



Slit seal for patchcords
12 x ø2-3 mm

EXTERNAL ADAPTER HOLDER

Can hold 4x SC SX or
LC DX adapters



ORDERING INFORMATION

Part number	Part name	Packaging
CO620	LUNA S ENCLOSURE UNLOADED 1 LUNA S ENCLOSURE 1 adapter holder 1 seal 1x 2-12 1 transparent cover for universal splice tray 1 pen	Unit box
CO630	LUNA M ENCLOSURE UNLOADED 1 LUNA M ENCLOSURE 1 adapter holder 1 seal 1x 2-12 1 transparent cover for universal splice tray 1 pen	Unit box
CO660	LUNA IP55 SEALING PORT 1x 2-12 mm	Box of 50 pcs
CO661	LUNA IP55 SEALING PORT 4x 4-8 mm	Box of 50 pcs
CO662	LUNA IP55 SEALING PORT 13x 2-3 mm	Box of 50 pcs
CO663	LUNA IP54 PRE-SLIT SEALING PORT	Box of 50 pcs
CO664	LUNA HOLDER FOR 4 EXTERNAL ADAPTERS	Bag of 50 pcs
CO681	SPLICE TRAY 12 HS UNIVERSAL <i>Without cover (one cover is delivered in the ENCLOSURE)</i>	Box of 10 pcs
CO680	SPLICE TRAY 12 CRIMP UNIVERSAL <i>Without cover (one cover is delivered in the ENCLOSURE)</i>	Box of 10 pcs
CO682	COVER FOR UNIVERSAL SPLICE TRAY	Box of 10 pcs
CO693	ANTI-VANDAL SCREW FOR LUNA ENCLOSURES	Bag of 10 pcs
CO664	EXTERNAL ADAPTERS HOLDER	Box of 50 pcs